

HOME

PRIVATE ESTATE

Cliff

AN INITIATIVE
OF

Canggu
Properti

Mishang
Balinvest

Places for People

HOME is an **international real estate** philosophy born out of the desire of creating premium lifestyle properties able to meet the needs of a contemporary global audience.

HOME infuses spaces with an understated **design flair**, and merges refined aesthetics with an utter quest for comfort and the devotion to **sustainability**, providing places that are homes to the body, the soul and one's ideals: **Places for People**.

HOME estates are located in conveniently connected venues that are still able to provide a deep connection with a **natural landscape** of great beauty, and offer a mix of services, customer care, **privacy and comfort** typical of **exclusive hospitality**.

HOME



Brand approach

Where Nature means Comfort

HOME

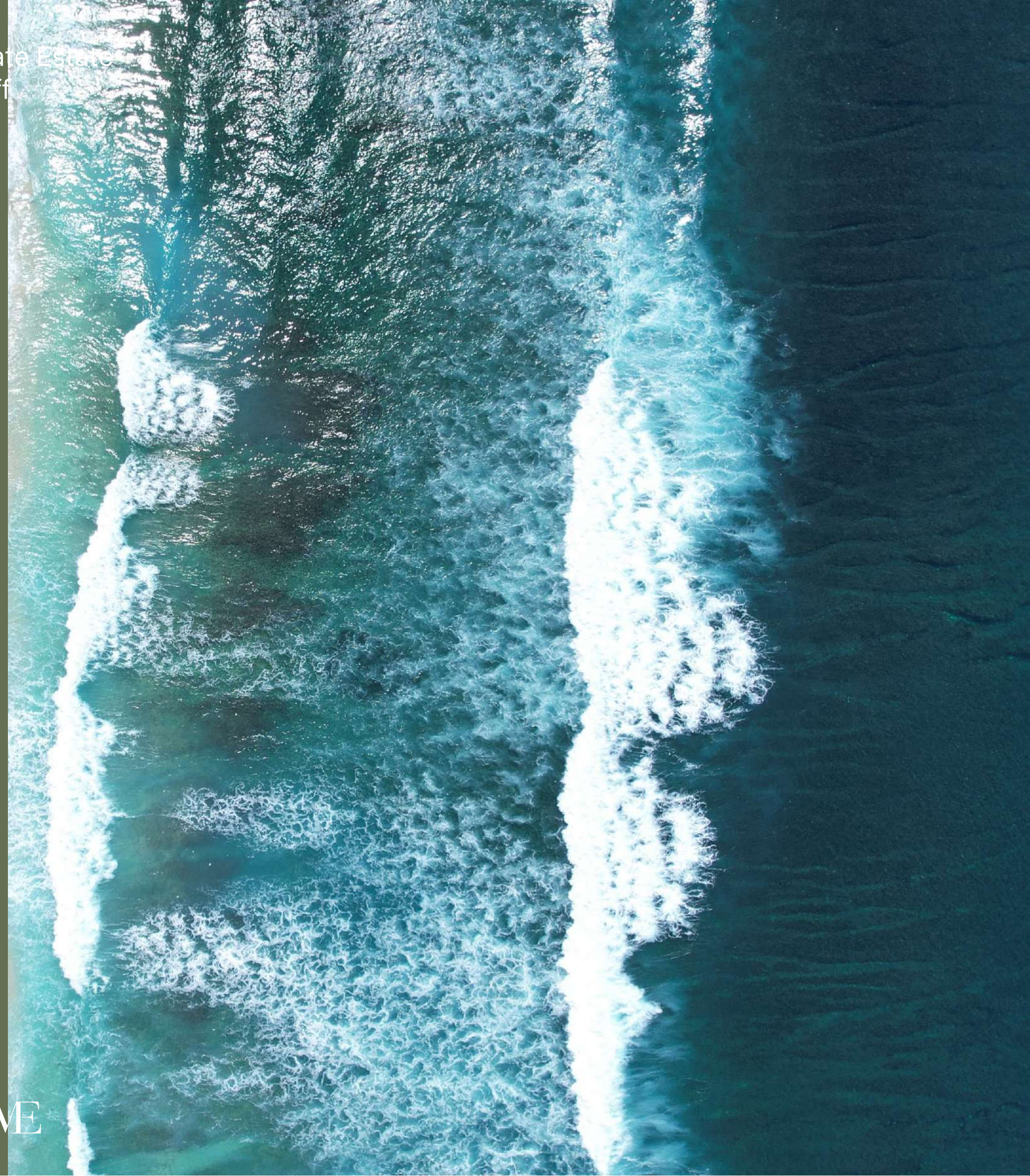


Area: Uluwatu, Bingin

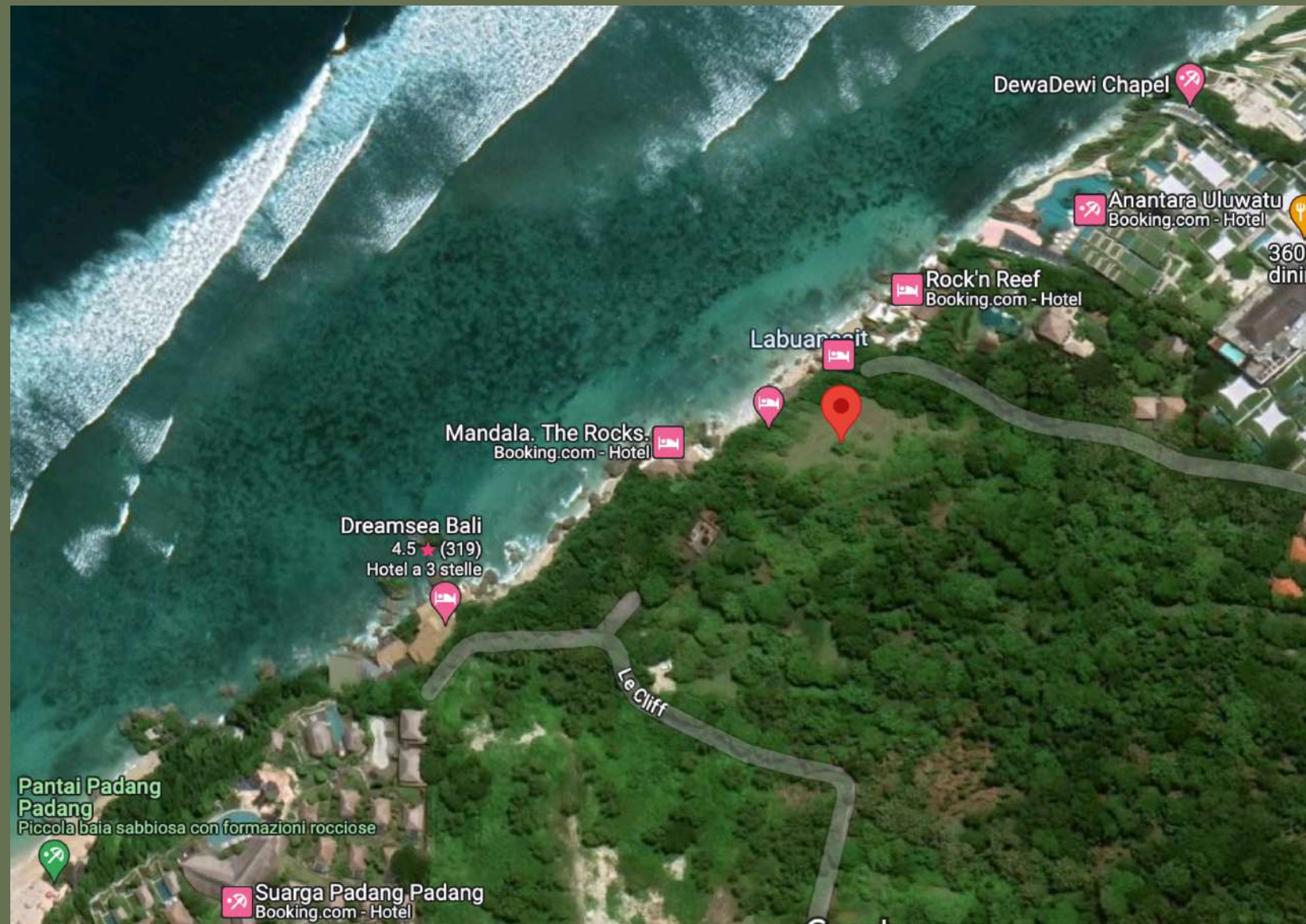
HOME Cliff is located in the southern part of Bali, in Uluwatu, which is now considered the most famous and **newly developing area of Bali**.

Famous for its **cliffs, surfing and nature approach to lifestyle**, this district is well known for its beautiful **beaches and colours**, making it one of the best place in Bali.

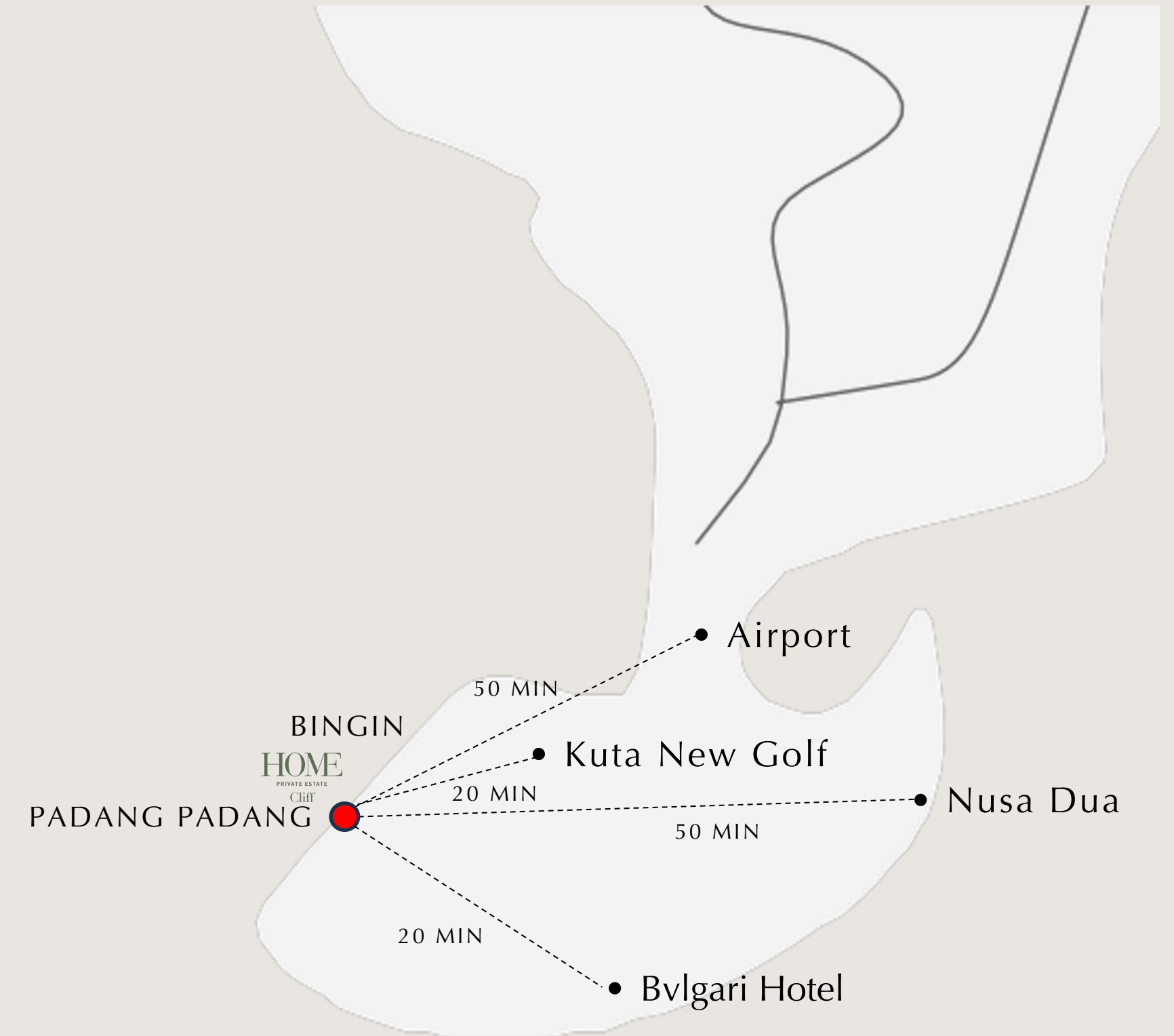
Its **wild cliffs** and **natural beaches** make Uluwatu one of the new trends in Bali and one of the best known growing real estate markets.



Land location



The project is located on the cliff between Padang Padang and Bingin beaches, only 50 minutes from Bali International Airport. The property has an area of 900 square metres with 180 degree sea view.



- 50 MIN FROM AIRPORT
- 20 MIN FROM KUTA GOLF

- 20 MIN FROM BVLGARI HOTEL
- 50 MIN FROM NUSA DUA

HOME Cliff, main data

Area: 900 m²

Location: Bali, Uluwatu, Indonesia

Typology: Apartments

Units: N 5 (3 bedrooms)

Floors: N 3+1

Facilities: swimming pool, car park

Unit typologies:

- 3 bedrooms (standard)
- 3 bedrooms (Sea-pool)
- 3 bedrooms (pool & garden)
- 3 bedrooms (attic)



Home-Private Estate
Cliff

EXTERIOR RENDERS

PRIVACY AND SEAVIEWS: DISTINCTIVE ELEMENTS OF A PREMIUM LIVING EXPERIENCE.

Welcome to HOME Cliff, a unique and exclusive project of 5 apartments nestled in the breathtaking location of Bingin in Bali.

Our design revolves around two key principles: ensuring captivating sea views from every apartment and creating distinct individual spaces. To achieve this all our flats embody the luxury of **independent villas**, with **stunning sea views** and **top-notch security**. Each unit has its own entrance, which guarantees maximum privacy. Furthermore, each viewpoint is designed to reduce visual interference between the different flats and allow you to enjoy the enchanting panorama.



Home-Private Estate Cliff

We went beyond mere shapes and focused on capturing movement within the structure. The architecture mimics a sailing yacht gracefully navigating the ever-changing waters, taking on different forms like ripples, clouds, and waves depending on the viewing angle. This fluid design captures the energy of the site, harmonizing with its surroundings through a dialogue of diverse elements. The interaction between internal apartment layouts, external factors, and shared spaces creates a seamless and harmonious form.

The apartments offer a range of sizes and distributions, catering to individual preferences. From the middle floor to the penthouse each unit exudes its own charm. The two ground-level apartments feature private front and sea gardens, enhancing the connection to nature. Furthermore, all units come with their own private swimming pools.

HOME



Home-Private Estate
Cliff



HOME

- V1 | ENTRANCE VIEW -

Home-Private Estate
Cliff



HOME

- V2 | SIDE VIEW -

Home-Private Estate
Cliff



HOME

- V3 | SIDE CLIFF VIEW -

Home-Private Estate
Cliff

HOME

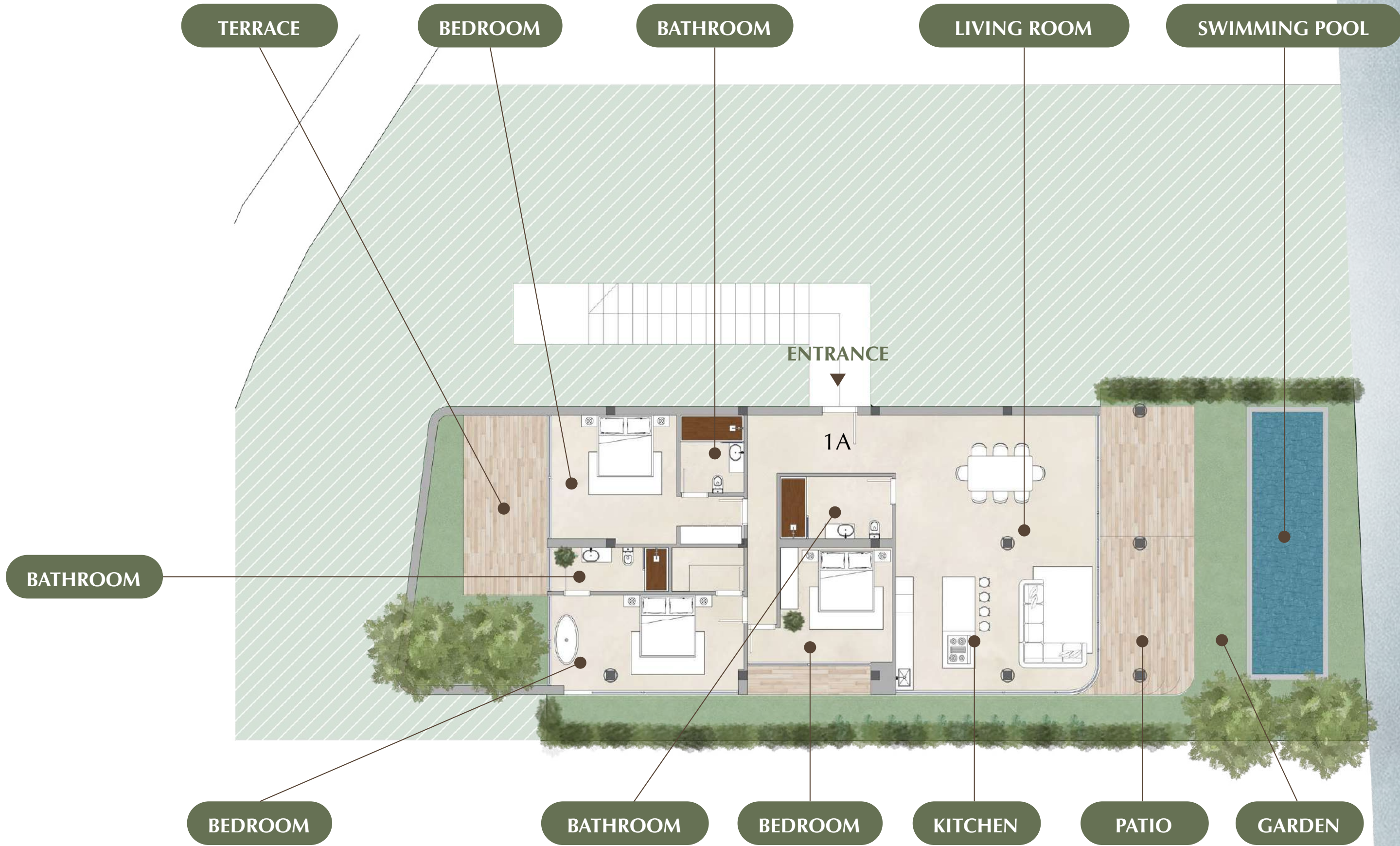
- V4 | TERRACE AP.5 VIEW -

Home-Private Estate
Cliff



FLOOR PLANS

Cliff - Level -1



HOME

Cliff - Level 1



HOME

Cliff - Level 2



HOME

Cliff - Level 3



HOME

Recap. numbers

- 5 APARTMENTS
- 900 SQM CONSTRUCTION AREA (AROUND)
- 3 BEDROOMS APARTMENTS
- SWIMMING POOL
- CAR PARK (with buggy car & valet service)

Starting price: 740.000 USD*



HOME CLIFF								
FLOOR	NAME	INTERIOR GROSS (m²)	INTERIOR NET (m²)	BALCONY GROSS (m²)	BALCONY NET (m²)	GARDEN GROSS (m²)	POOL (m²)	TOTAL GROSS (m²)
-1	1A	179.23	160.00	34.60	34.60	179.00	26.00	392.83
1	2A	178.00	160.00	85.68	38.00	112.00	26.00	375.68
2	3A	178.40	140.00	88.00	46.00	0.00	26.00	266.40
2	4A	174.40	137.00	64.00	25.00	0.00	26.00	238.40
3	5A	168.00	151.00	155.00	79.00	0.00	26.00	323.00
SUB.TOTAL		878.03	748.00	427.28	222.60	291.00	130.00	1596.31

SHARE GARDEN	207.50
PARKING AREA	0.00
ACCESS CORRIDOS	0.00

TOTAL INTERIOR CONSTRUCTION SURFACE	878.03
TOTAL OUTDOOR SURFACE (BALCONIES/CORRIDORS/POOLS)	427.28
TOTAL GARDEN SURFACE	498.50
TOTAL CONSTRUCTION SURFACE (INTERIOR+OUTDOOR SURFACE)	1305.31

THANKS

HOME

PRIVATE ESTATE

Places for People